



# GAT MONTHLY MEMBERSHIP PROGRESS REPORT

Results as of: 4/30/2021

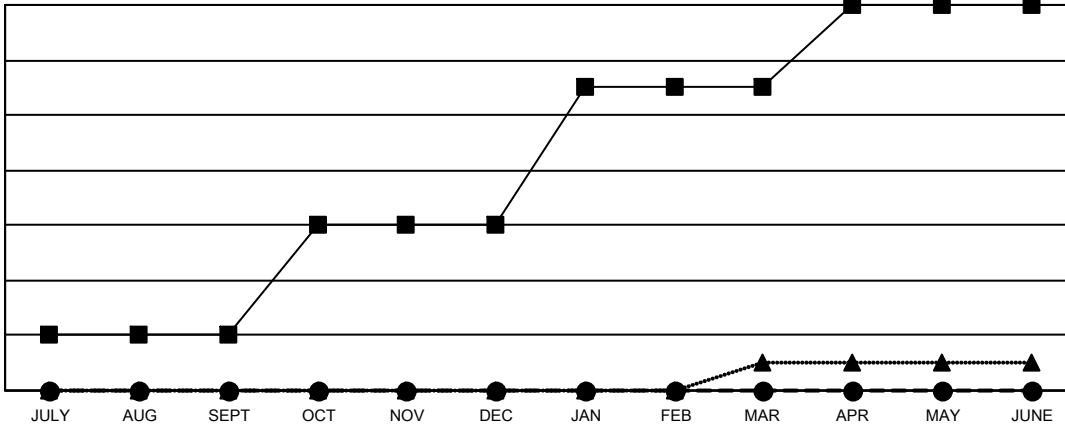
Multiple District 9

LOCATION: IOWA

Clubs			
RESULTS FOR 2020-2021			
QUARTER	NEW CLUB GOAL	NEW CLUBS	DROPPED CLUBS
JULY/AUG/SEPT	2	0	1
OCT/NOV/DEC	4	0	0
JAN/FEB/MAR	5	0	3
APR/MAY/JUNE	3	0	0

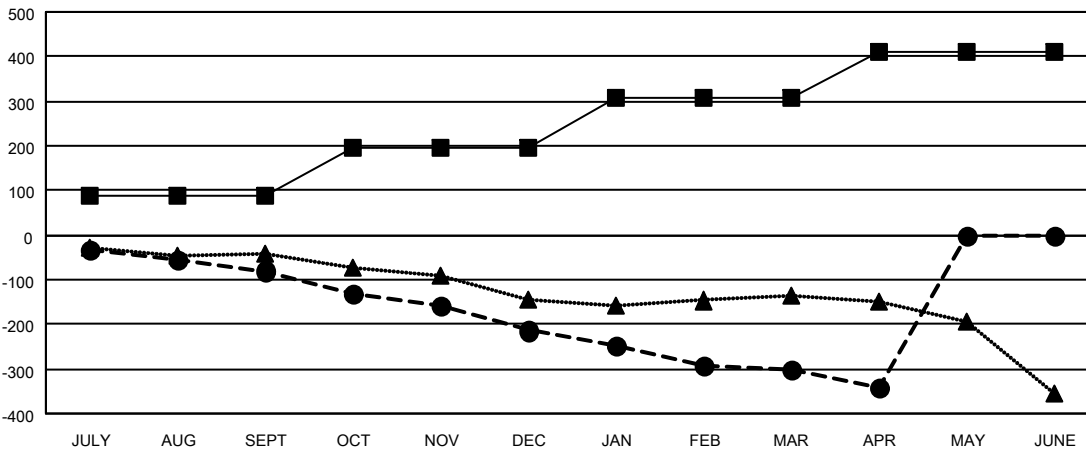
Members			
RESULTS FOR 2020-2021			
QUARTER	MEMBER GROWTH NET GOAL	MEMBER GROWTH ACTUAL	DROPPED MEMBERS ACTUAL (including transfers)
JULY/AUG/SEPT	88	123	185
OCT/NOV/DEC	108	85	208
JAN/FEB/MAR	110	73	153
APR/MAY/JUNE	105	38	77

GOALS AND ACTUAL NEW CLUBS CUMULATIVE



- - CURRENT YEAR GOALS FOR NEW CLUBS
- - CURRENT YEAR ACTUAL NEW CLUBS
- ▲ - LAST YEAR ACTUAL NEW CLUBS

GOALS AND ACTUAL MEMBERS CUMULATIVE



- - MEMBER GROWTH NET GOAL
- - MEMBER GROWTH ACTUAL
- ▲ - LAST YEAR MEMBERSHIP ACTUAL

DROPPED CLUBS: 4	
<u>DROPPED MEMBERS</u>	
DECEASED	128
CLUB CANCELLED	2
OTHER	493
<b>TOTAL</b>	<b>623</b>

113 CLUBS OF 307 ADDED 1 OR MORE NEW MEMBERS

<u>GENDER DISTRIBUTION</u>	
MALE	5,358 (73.17%)
FEMALE	1,965 (26.83%)

[CLICK HERE FOR CUMULATIVE MEMBERSHIP DATA](#)

TOTAL FAMILY UNIT MEMBERS	1,476
FAMILY MEMBERS PAYING HALF DUES	747